



57 Gerald Street

South Shields, NE34 8RG

Offers Around £150,000



Ideal for the young couple or family on this small private cul de sac in Whiteleas, we are delighted to offer this spacious three bedroom semi detached home, enhanced with a garage to the side, good sized gardens with synthetic grass and two sheds. This modern efficient home has gas central heating, double glazing and offers a lounge to the rear, kitchen/diner and a handy cloak Wc, whilst to the first floor, the three bedrooms are served by the family bathroom with shower over the bath. Early viewing advised.



Entrance hall

Stairs to the first floor, radiator

Cloaks WC

Wash basin and WC, radiator

Living room 13'5" x 10'10" (4.10 x 3.31)

To the rear of the home and with French doors to the garden, radiator

Kitchen diner 16'1" x 6'7" (4.92 x 2.03)

Fitted with wall, base units and work surfaces housing a sink unit, gas hob with oven under and filter hood over, space for appliances, tiled splash backs, radiator

First floor

Landing with radiator

Bedroom 1 13'5" x 8'4" (4.10 x 2.56)

To the front of the home with a radiator

Bedroom 2 12'3" x 7'1" (3.75 x 2.18)

Radiator

Bedroom 3 9'0" x 6'0" (2.75 x 1.85)

Radiator

Bathroom

Three piece suite in white comprising a bath with an electric shower over and a mixer shower tap, wash basin and WC, part tiled walls, radiator.

Garage 15'11" x 8'3" (4.86 x 2.53)

A great prefab garage constructed at the end of a drive with an up and over door and courtesy door to the garden. There is off street parking in front of the garage

External

Enclosed rear gardens with synthetic grass, flower beds for planting, a large garden shed/man cave measuring 2.43 x 2.41 and an additional bike shed

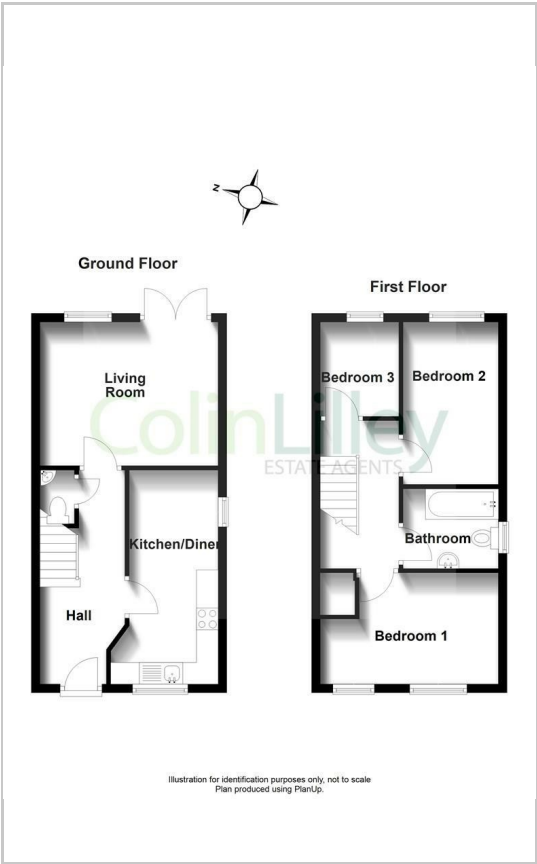
Note

Freehold Title, Council Tax Band C, Mains Services Connected, Flood Risk very low. Broadband Basic 27 Mbps. Satellite/Fibre Tv Availability BT, Sky and Virgin. Mobile Coverage O2 and Vodafone likely, EE and Three limited.

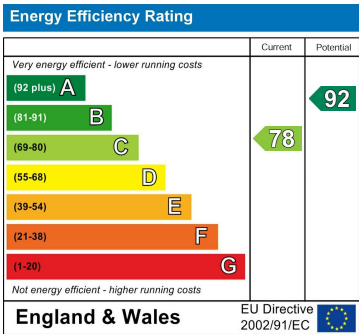
Area Map



Floor Plans



Energy Efficiency Graph



These particulars, whilst believed to be accurate are set out as a general outline only for guidance and do not constitute any part of an offer or contract. Intending purchasers should not rely on them as statements of representation of fact, but must satisfy themselves by inspection or otherwise as to their accuracy. No person in this firms employment has the authority to make or give any representation or warranty in respect of the property.